

MICROZONAZIONE SISMICA


Carta di microzonazione sismica –

FA<sub>PGA</sub> 1/2


scala 1:5.000

Regione Emilia–Romagna

Comune di Bibbiano



Regione  
Emilia-Romagna


Soggetto realizzatore  
  
Direttori tecnici:  
Dr. Geol. Carlo Caleffi  
Dr. Geol. Francesco Cerutti


Data  
Aprile 2025

MS3

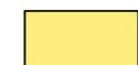
Dr. Geol. Matteo Baisi  
Dr.ssa Olga Brontesi  
Dr. Geol. Alessandro Ferrari  
Dr.ssa Geol. Melinda Raimondo


Legenda


 Confine comunale

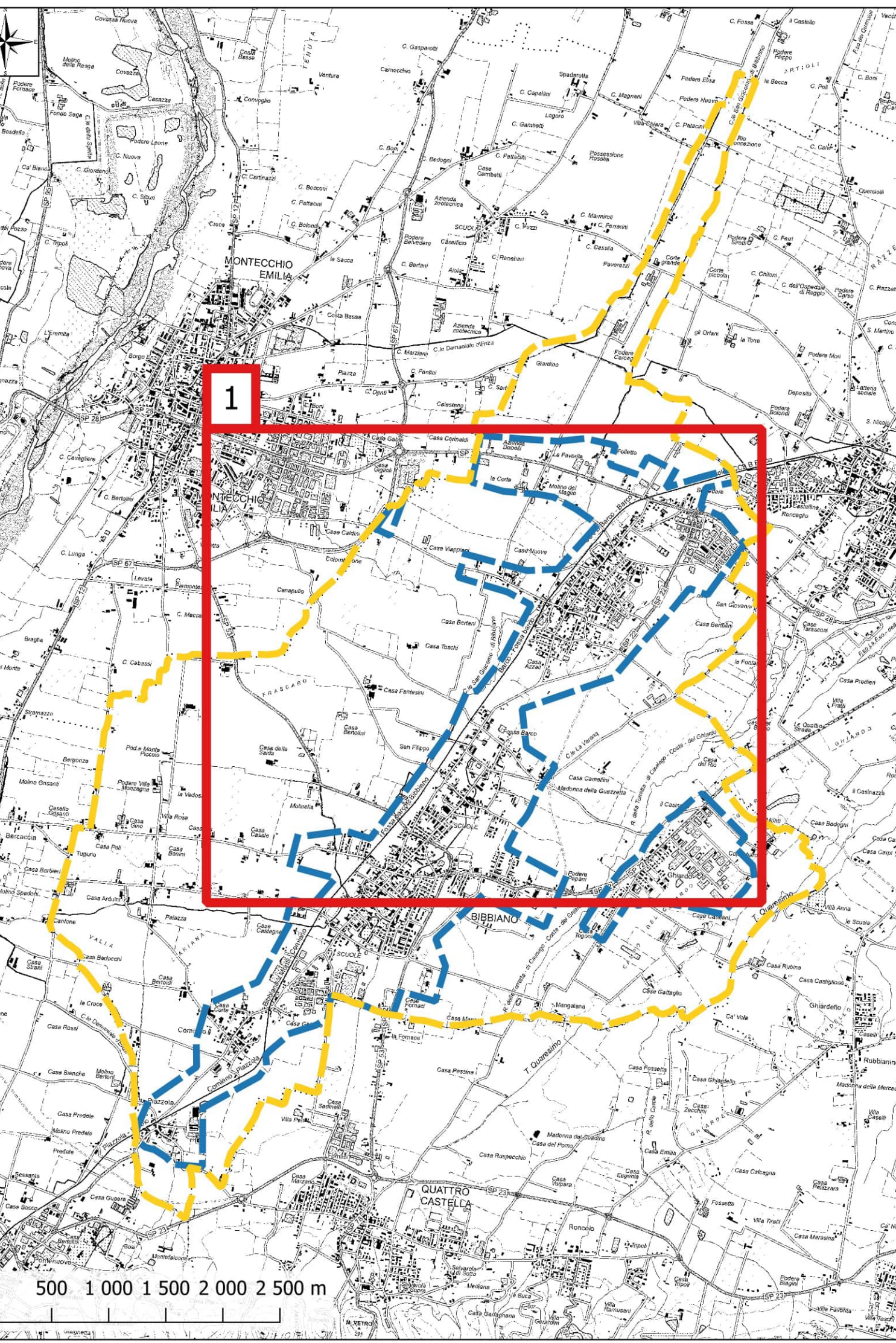
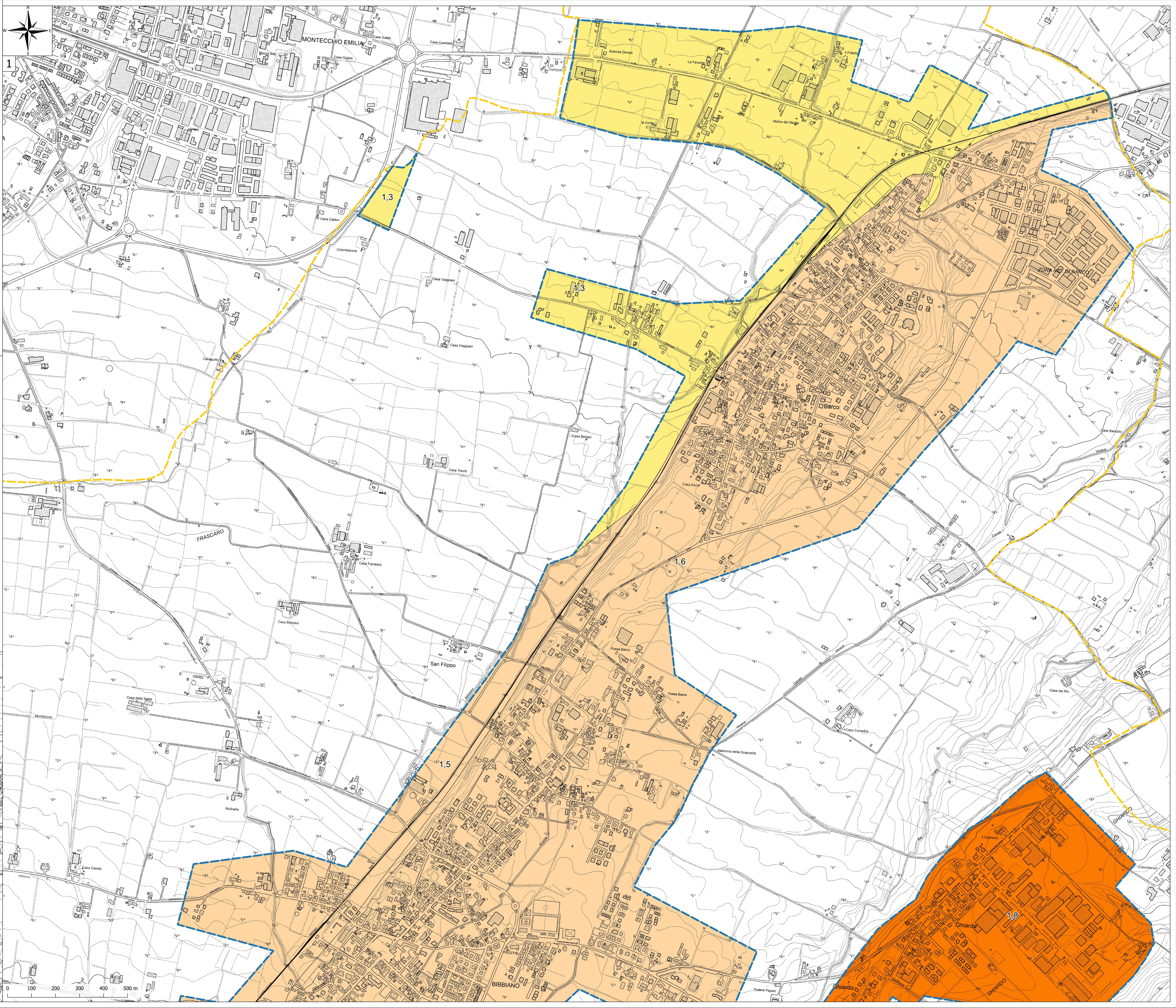
 Aree oggetto di Microzonazione Sismica

Zone stabili suscettibili di amplificazioni locali

 FA-<sub>PGA</sub> = 1,3 - 1,4

 FA-<sub>PGA</sub> = 1,5 - 1,6

 FA-<sub>PGA</sub> = 1,7 - 1,8





MICROZONAZIONE SISMICA


Carta di microzonazione sismica –

FA<sub>PGA</sub> 2/2

scala 1:5.000


Regione Emilia–Romagna

Comune di Bibbiano



Regione  
Emilia-Romagna

Soggetto realizzatore

  
Direttori tecnici:  
Dr. Geol. Carlo Caleffi  
Dr. Geol. Francesco Cerutti  
  
Dr. Geol. Matteo Balsi  
Dr.ssa Olga Brontesi  
Dr. Geol. Alessandro Ferrari  
Dr.ssa Geol. Melinda Raimondo

Data

Aprile 2025

MS3

Legenda

 Confine comunale

 Aree oggetto di Microzonazione Sismica

Zone stabili suscettibili di amplificazioni locali

 FA-<sub>PGA</sub> = 1,5 – 1,6

 FA-<sub>PGA</sub> = 1,7 – 1,8

